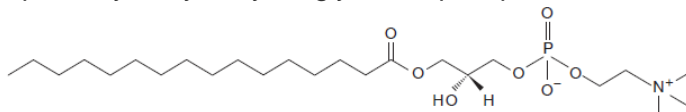


リン脂質
Phospholipids

U241202A

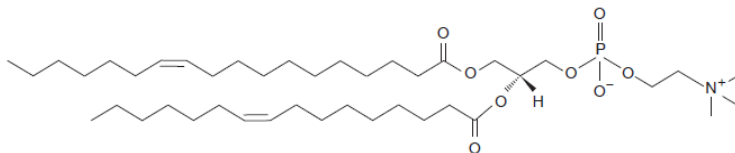
Lysophosphatidylcholine (LPC)

LPC (16:0): 1-palmitoyl-2-hydroxy-sn-glycero-3-phosphocholine

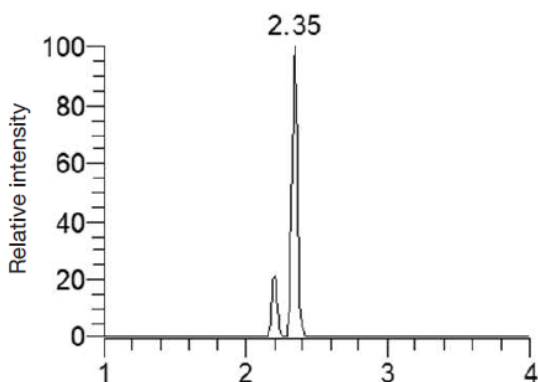


Phosphatidylcholine (PC)

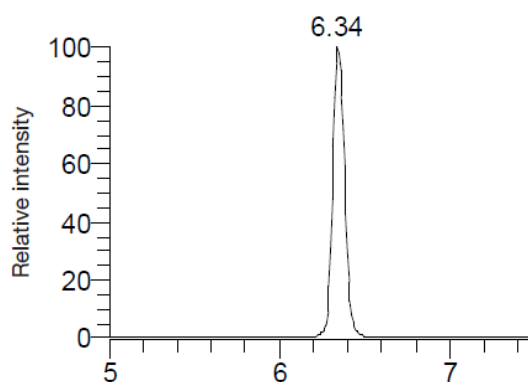
PC (34:2): 1-vaccenoyl-2-palmitoleoyl-sn-glycero-3-phosphocholine



LPC (16:0) (m/z 496.3398)



PC (34:2) (m/z 758.5694)



Courtesy of Sergey Girel, Institute of Pharmaceutical Sciences of Western Switzerland (University of Geneva), Geneva, Switzerland.

| | |
|-------------|------------------------------------------------------------------------------------------------------------------------------------------------------------------------------------------------------------------------|
| Column | : Accura Triart C18 (1.9 μ m, 12 nm) 100 X 2.1 mm I.D. |
| Eluent | : A) 10 mM HCOONH ₄ /acetonitrile/formic acid (40/60/0.1) B) 10 mM HCOONH ₄ in 2-propanol/acetonitrile/formic acid (90/10/0.1) 25–55%B (0–3.5 min), 55–95%B (3.5–15 min), 95%B (15–17 min) |
| Flow rate | : 0.4 mL/min |
| Temperature | : 50°C |
| Detection | : ESI positive mode, Orbitrap Q Exactive Focus |
| Injection | : 2 μ L |
| Sample | : 100 μ L pooled human plasma precipitated with 2-propanol (Sample-to-solvent ratio 1:6; reconstituted with 100 μ L of 2-propanol) |